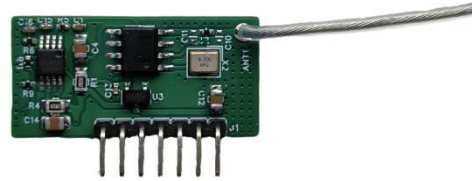


RW-AKM1316-V1.0 Specification

Product Introduction

RW-AKM1316-V1.0 is a multi-functional control module integrating voice recognition, Bluetooth transmission, and dimming/color tuning. It provides convenience for scenarios such as smart homes, smart appliances, and smart lighting. It supports custom command words, wake-up words, user-side self-learning, and can accurately recognize various dialects。



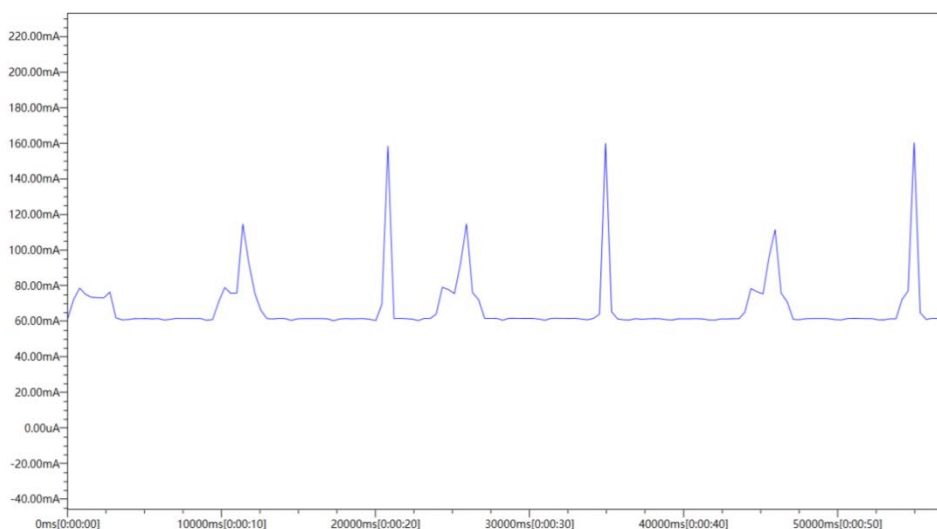
Basic Features:

- Customizable command words and wake-up words
- High recognition rate
- 2400 - 2483.5MHz low - cost and low - power wireless transceiver module
- Operates in the general 2.4GHz ISM frequency band
- Air data rate/transmission rate: 1Mbps
- Programmable control of RF output power, with a maximum power of +8dBm

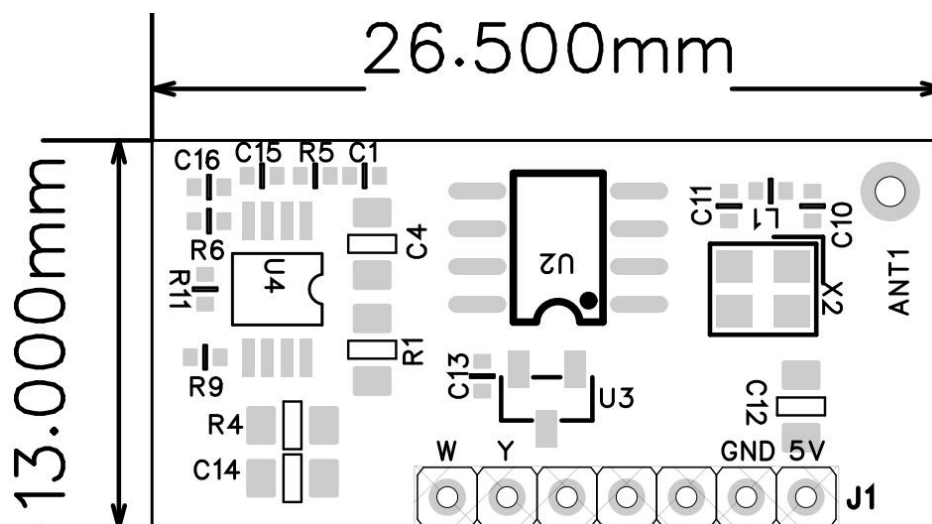
Technical Parameters

1	Operating Voltage	+5V DC
2	Receiving Current	65mA
3	Operating Frequency	2.402 GHz
4	Transmission Rate	1Mbps
5	Output Power	+8dBm
6	Receiving Sensitivity	-90dBm
7	Operating Temperature	-10℃~+85℃
8	Antenna Type	Whip antenna
9	Communication Distance	Approximately 30M without obstacles
10	Interface Mode	2.0mm pin header
11	Overall Dimensions	26.5×13.0mm

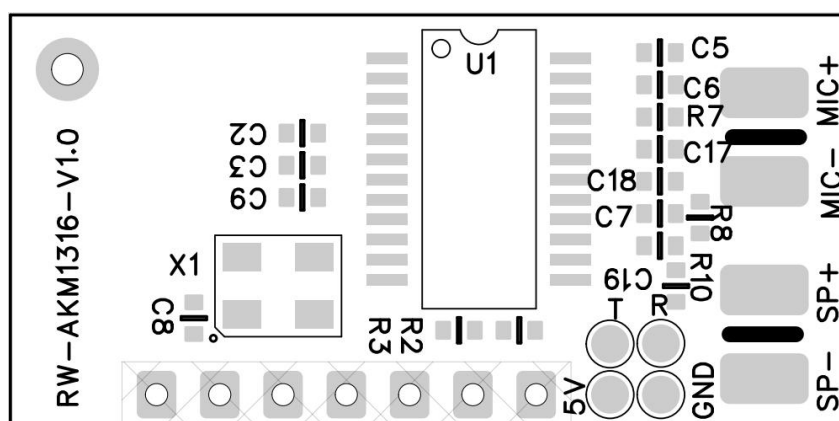
Current Parameters



Dimension Drawing



Front



Back

Pin Definition

1	W:	PWM output, cool color temperature output
2	Y:	PWM output, warm color temperature output
3	GND:	Ground wire
4	5V:	+5V power input

Precautions

- Pay attention to anti - static during transportation and use. Wear anti - static wristbands and gloves when taking the module.;
- The workbench and assembly table should be grounded, and the installation equipment should be protected against static electricity.;
- The module should be well grounded to reduce parasitic inductance;
- Prevent I/O port breakdown. For example, a 50Hz on the power board needs to have a series resistor and a voltage regulator tube on the port line
- Semi - finished products should be placed independently during production to avoid damage to the module caused by the discharge of power capacitors.
 - The antenna should be kept away from the power transformer to prevent the reduction of receiving efficiency.
 - If a fault occurs, do not disassemble it privately. If you have any questions, please contact the supplier.
 - This manual is for reference only. Please refer to the actual product. The product is subject to change without prior notice.

Warranty Terms

- The warranty period is 2 years from the date of leaving the factory.
- During the warranty period, if there is a product quality problem, our company will provide free repair or replacement services.

Non - warranty Terms

The following situations are not within the scope of free warranty or replacement services:

- Beyond the warranty period.
- The product has serious damage or deformation in appearance.
- Damage caused by natural disasters and force majeure.
- The product warranty label is torn off.
- Without a contract or invoice certificate signed by Shenzhen Wireless Tao Technology.

Note:

1. Repair or replacement is the only remedy for our company to customers. Our company shall not be liable for any incidental damages, unless within the scope of applicable laws.
2. Our company reserves the right to amend or adjust these warranty terms, which shall be published in writing.

Intelligent Local Thesaurus

Semantic Tag	Command Word	Command Word Type		
1	آيسان			
2	شو روشن	Command word	02 Turn on the light	
3	شو خاموش	Command word	03 Turn off the light	
4	رنگ تغيير	Command word	04 Change color	Change color
5	زرد نور	Command word	05 Yellow light	
6	سفيد نور	Command word	06 White light	
7	يخى نور	Command word	07 Neutral light	
8	روشنترين	Command word	08 Maximum brightness	brightest
9	وسط روشنى	Command word	09 Medium brightness	Medium brightness
10	كمترين روشنائى	Command word	10 Minimum brightness	
11	نور خاب	Command word	11 Night light	
12	پور نور	Command word	12 Brighter	
13	تاريك	Command word	13 Darker	
14	آسان حالت	Command word	14 Leisure mode	
15	كار حالت	Command word	15 Bright mode	Working mode